

Council Committee Meeting Minutes  
April 13, 2021

**MINUTES**  
**COUNCIL COMMITTEE MEETING**  
**MUNICIPAL DISTRICT OF PINCHER CREEK NO. 9**  
**Tuesday, April 13, 2021 11:00 am**  
**Via GoToMeeting**

**Present:** Deputy Reeve Rick Lemire, Councillors Terry Yagos, Quentin Stevick and Bev Everts.

**Staff:** CAO Troy MacCulloch, Director of Development and Community Services Roland Milligan, Director of Finance Meghan Dobie and Executive Assistant Jessica McClelland.

**Absent:** Reeve Brian Hammond

Deputy Reeve Rick Lemire called the meeting to order, the time being 11:00 am.

1. Approval of Agenda

Councillor Quentin Stevick

Moved that the agenda for April 13, 2021 be approved as presented.

Carried

2. Riversdale Resources - Grassy Mountain Project

Keith Bott, Community Relations Advisor with Riversdale Resources, along with Jackie Woodman, Alisdair Gibbons and Gary Houston attended the meeting at this time to present an update on the Grassy Mountain Project. Their updated powerpoint presentation is attached to and forming part of these notes.

3. Closed Session

4. Adjournment

Councillor Terry Yagos

Moved that the Committee Meeting adjourn, the time being 12:02 pm

Carried



# Municipal Update MD of Pincher Creek April 13, 2021





# Agenda

- Hearing Summary & Regulatory Timeline
- 1976 Coal Policy
- What's New?
  - Office
  - Employment Numbers
  - COVID-19 Response
- Water Quantity & Water Quality

# Hearing Summary

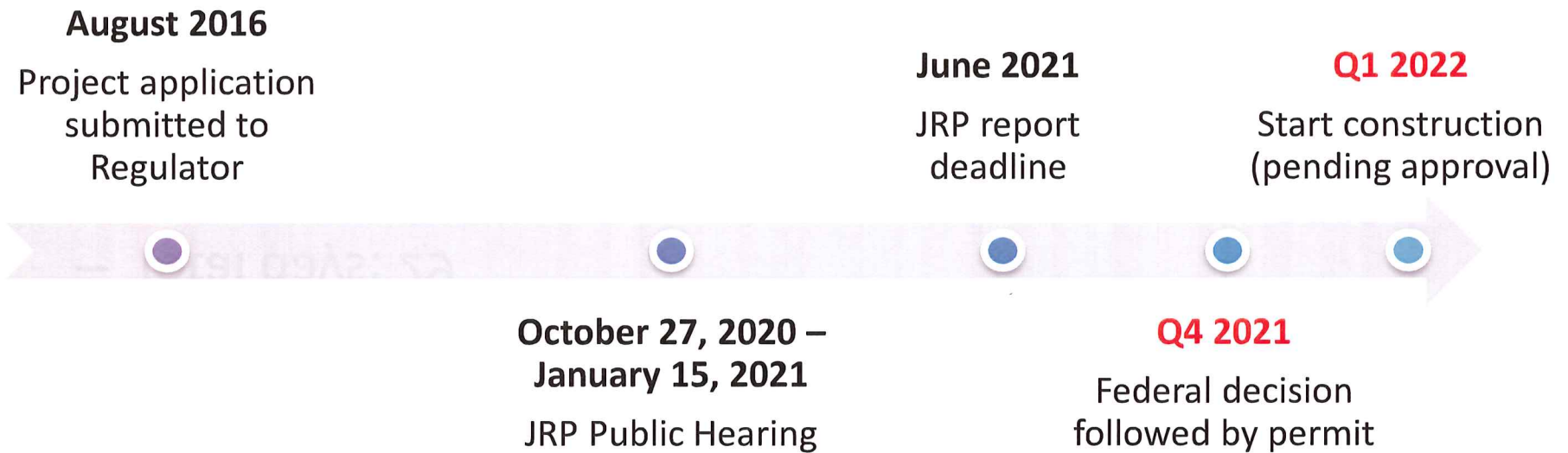
- **Public Hearing**

- Start – October 27
- End – December 2
- Total days: 29

- **Written Final Argument**

- Benga closing argument – December 15
- Participant closing arguments – January 8
- Benga response submission – January 15

# Regulatory Timeline



# 1976 Coal Policy

- Grassy Mountain = **Category 4**

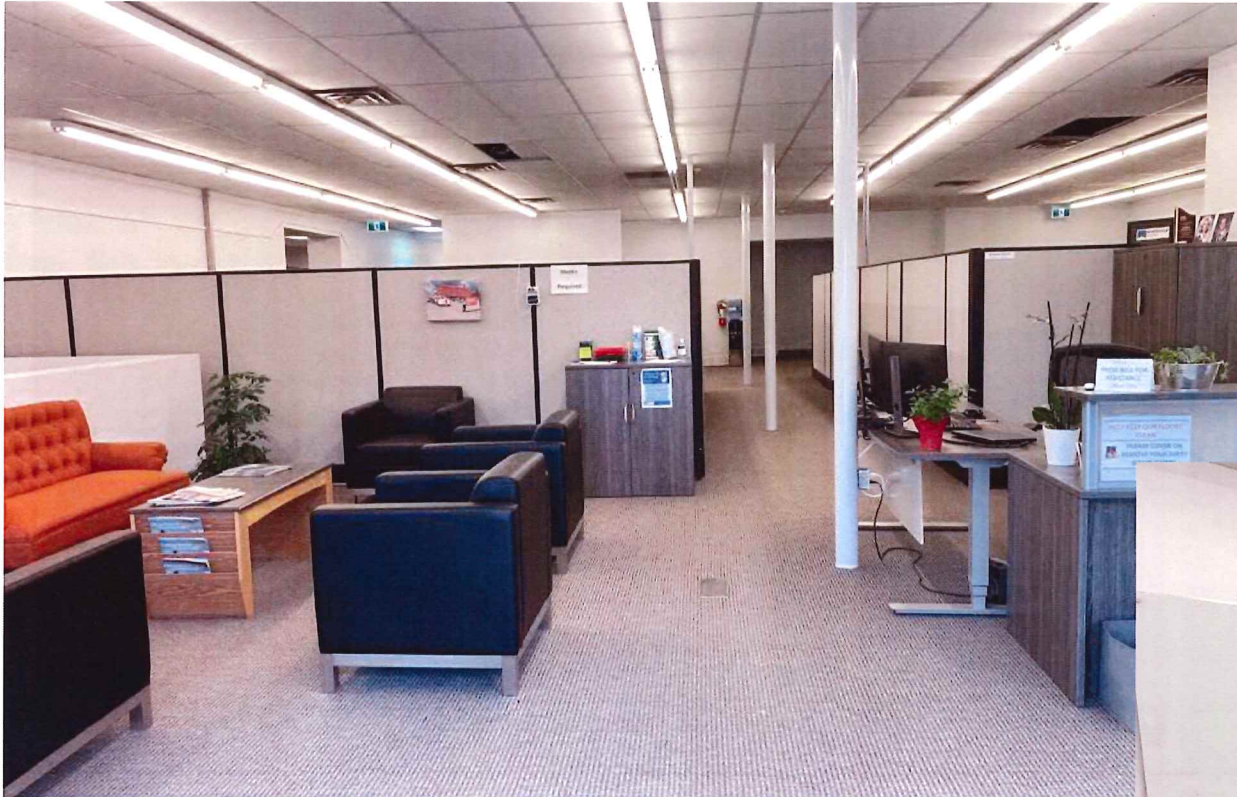
- Was Grassy Mountain impacted by the rescission of the Coal Policy?

–NO

- Is Grassy Mountain impacted by the reinstatement of the Coal Policy?

–NO

# What's New?



New  
Office Space  
in Blairmore





# Current Staffing Numbers

Project Staff: 14	Permanent Roles: 32.5
<ul style="list-style-type: none"> <li>• Project Director</li> <li>• Project Engineer</li> <li><b>Construction Mgr.</b></li> <li>• Construction Coordinator</li> <li>• General Superintendent</li> <li><b>Engineering Mgr.</b></li> <li>• Project Engineer (X3)</li> <li>• Civil Engineering Lead</li> <li><b>Project Controls Mgr.</b></li> <li>• Sr Planner/Scheduler</li> <li>• Document Control Lead</li> <li>• Project Coordinator</li> </ul>	<ul style="list-style-type: none"> <li><b>CEO</b></li> <li>• Head of Marketing</li> <li><b>CFO</b></li> <li>• Sr Mgr. Commercial</li> <li>• Contracts &amp; Procurement Mgr.</li> <li>• Contracts Mgr.</li> <li>• Contracts Admin</li> <li>• Controller</li> <li>• Sr Accountant</li> <li>• Accountant</li> <li>• Sr Legal Counsel</li> <li><b>Executive Vice President</b></li> <li>• Admin Assistant</li> <li><b>Interim Mgr. Tech Services</b></li> <li>• Mining Engineer (X3)</li> <li>• Sr Geologist</li> <li>• Geologist II</li> </ul>
<ul style="list-style-type: none"> <li><b>Sr Mgr. Maintenance</b></li> <li>• Maintenance Project Engineer</li> <li><b>Sr Mgr. Human Resources</b></li> <li>• HR Admin</li> <li><b>Interim Mgr. PR</b></li> <li>• Sr Advisor Indigenous Relations</li> <li>• Piiikani Nation Coordinator</li> <li>• Communications Coordinator</li> <li>• Community Advisor (0.5)</li> <li><b>Sr Mgr. SH&amp;E</b></li> <li>• Sr Advisor Environment</li> <li>• Enviro Coordinator</li> <li>• Enviro Technician</li> <li>• Safety Advisor</li> </ul>	

# Our COVID-19 Response

- **June 30**
  - Provincial government reduces restrictions as case counts from "first wave" subside
- **August 3**
  - Riversdale SH&E meets with Ministry of Labour (OHS) to review pandemic response
  - Staff move into new Blairmore office
  - ~70% staff return to the office
- **October 22**
  - "Red Dot" initiative (designated seating) and mandatory masks in office
- **November 13**
  - Staff headcount reduced to 50% in Blairmore and Calgary offices
  - Using Noco fogger in all common areas
- **November 23**
  - Public Health State of Emergency
- **December 11**
  - Blairmore and Calgary offices closed
  - All staff working from home
- **April 2021**
  - Some staff back in the office





# Water Quantity



## Current Water Diversion License Applications:

- Allocation of water available for industrial purposes
- Oldman River Basin Water Allocation Order
- 185,022m<sup>3</sup> (150 acre-feet)
- Transfer of license from Devon Canada:
- Crowsnest River
- 123,350m<sup>3</sup> (100 acre-feet)
- Temporary transfer of license held by Municipality of Crowsnest Pass:
- York Creek
- 250,400m<sup>3</sup> (203 acre-feet)

# Water Quantity

Water captured from:

- Precipitation
- Snowmelt
- Groundwater

No water will  
be taken or  
diverted from  
creeks or  
rivers

## Water Uses

Coal Processing  
Plant

Dust Management

Evaporation from  
Ponds

Washing  
Equipment

Potable Supply

Water leaving on coal:  
~3.3% of clean coal  
= 150,000m<sup>3</sup>/year



Maximize water  
re-use and re-cycle

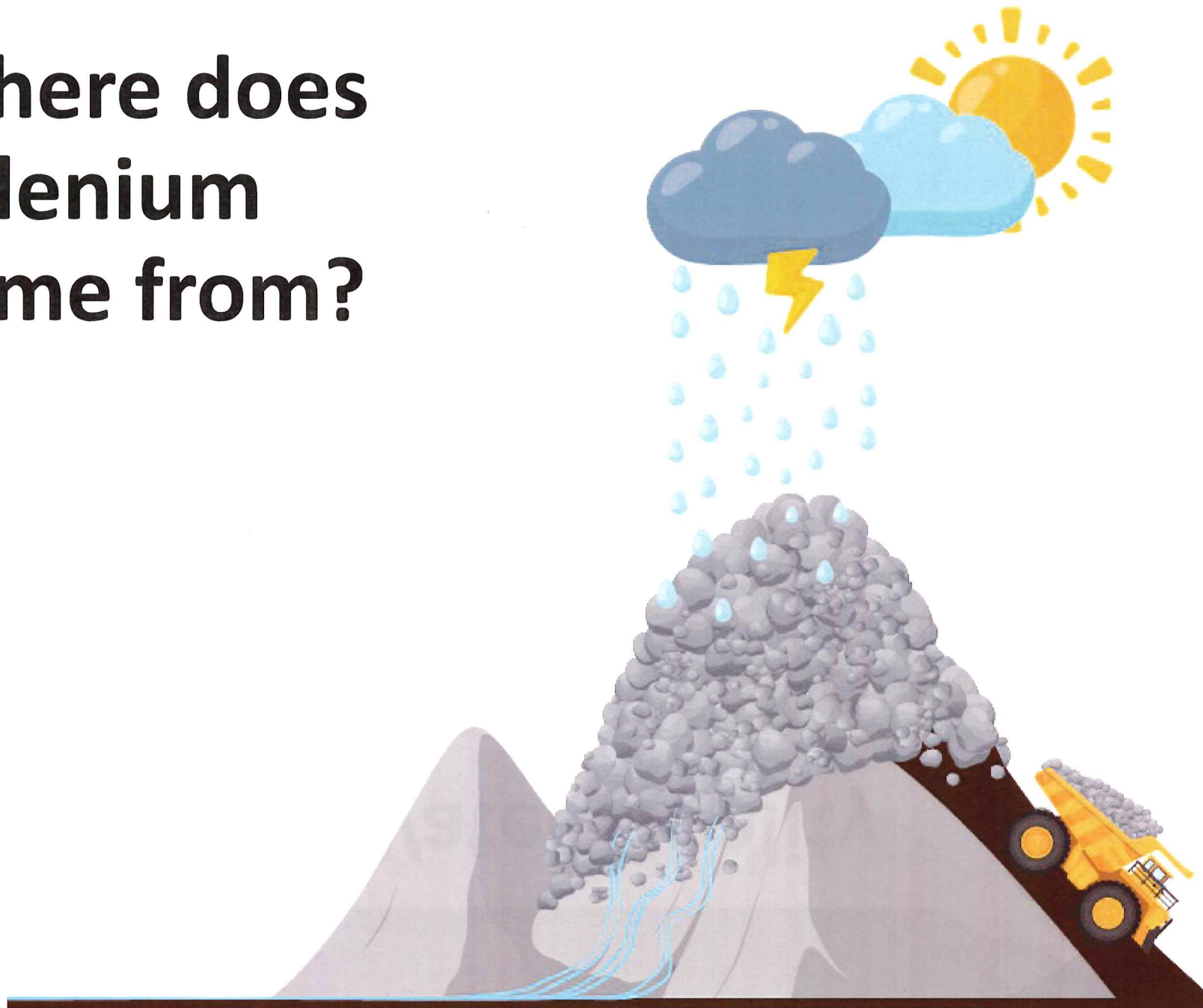
Blairmore Creek



# Water Quality

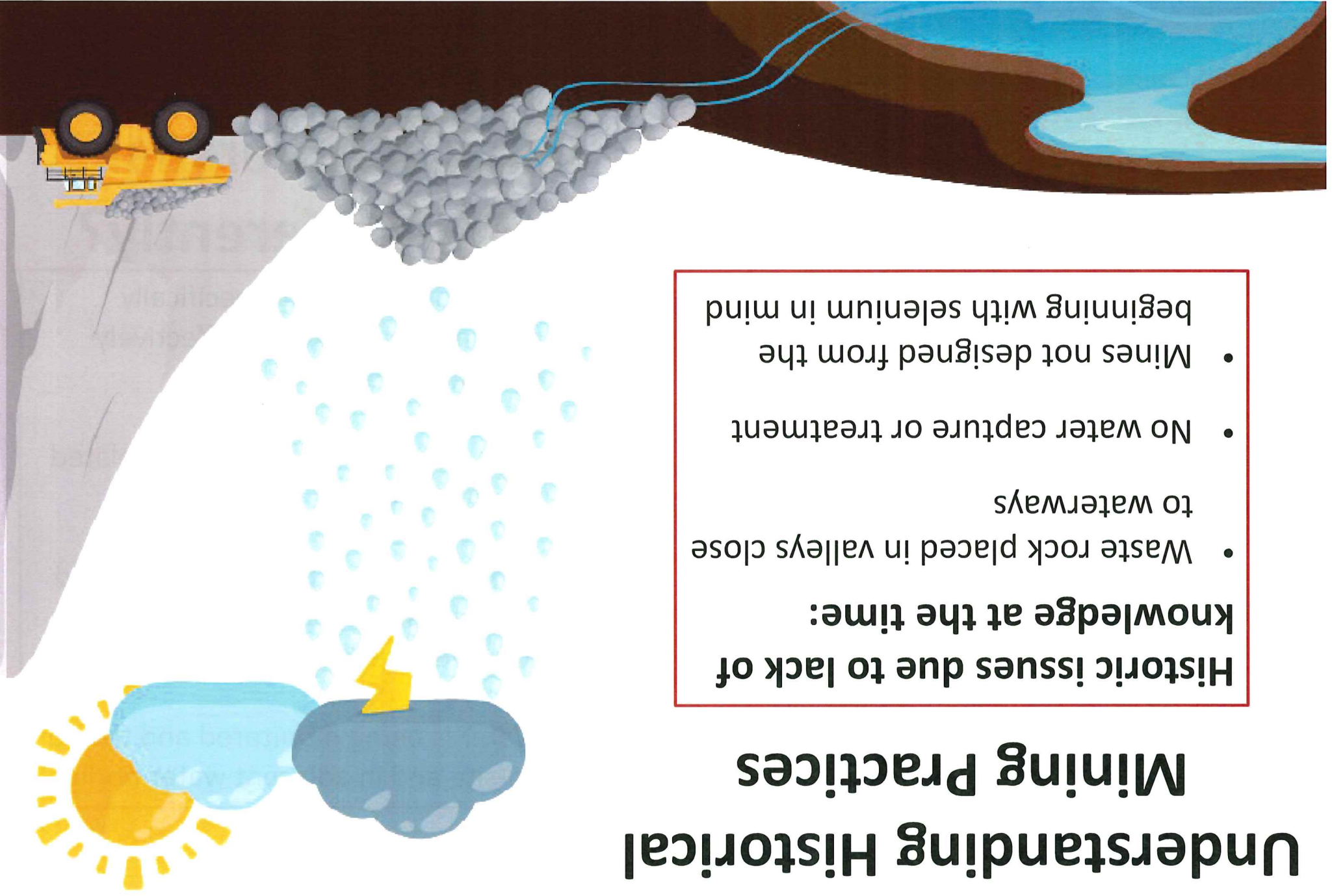


**Where does  
Selenium  
come from?**



# Understanding Historical Mining Practices

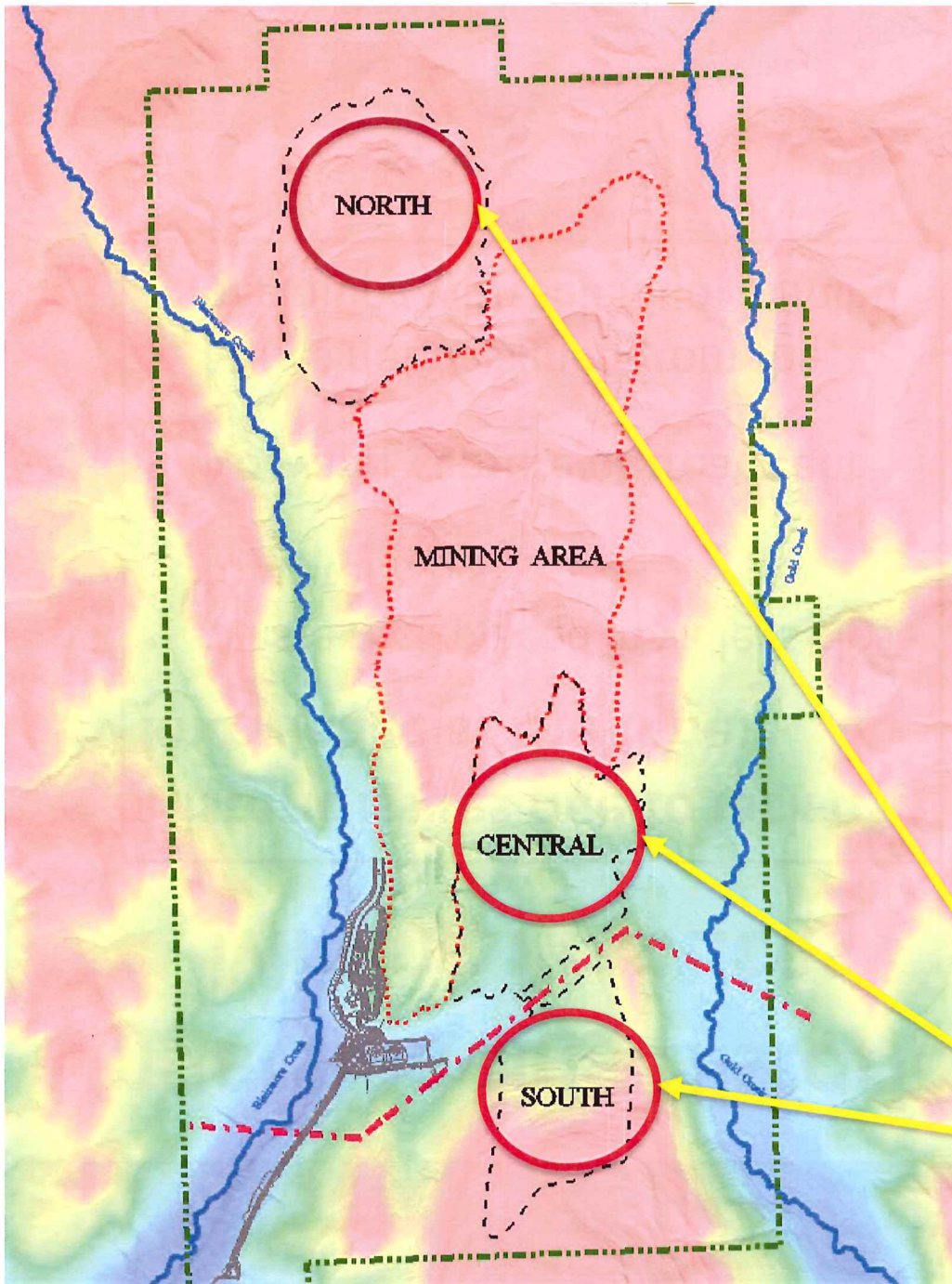
- Historic issues due to lack of knowledge at the time:
- Waste rock placed in valleys close to waterways
- No water capture or treatment
- Mines not designed from the beginning with selenium in mind



# What is Riversdale Doing Differently?

- This project is being specifically designed to safely and effectively manage selenium
- Rock is being placed in high, isolated areas, away from streams
- Contact water is being captured and treated using modern selenium treatment technology
- Water is being monitored and tested on-site and in adjacent water bodies

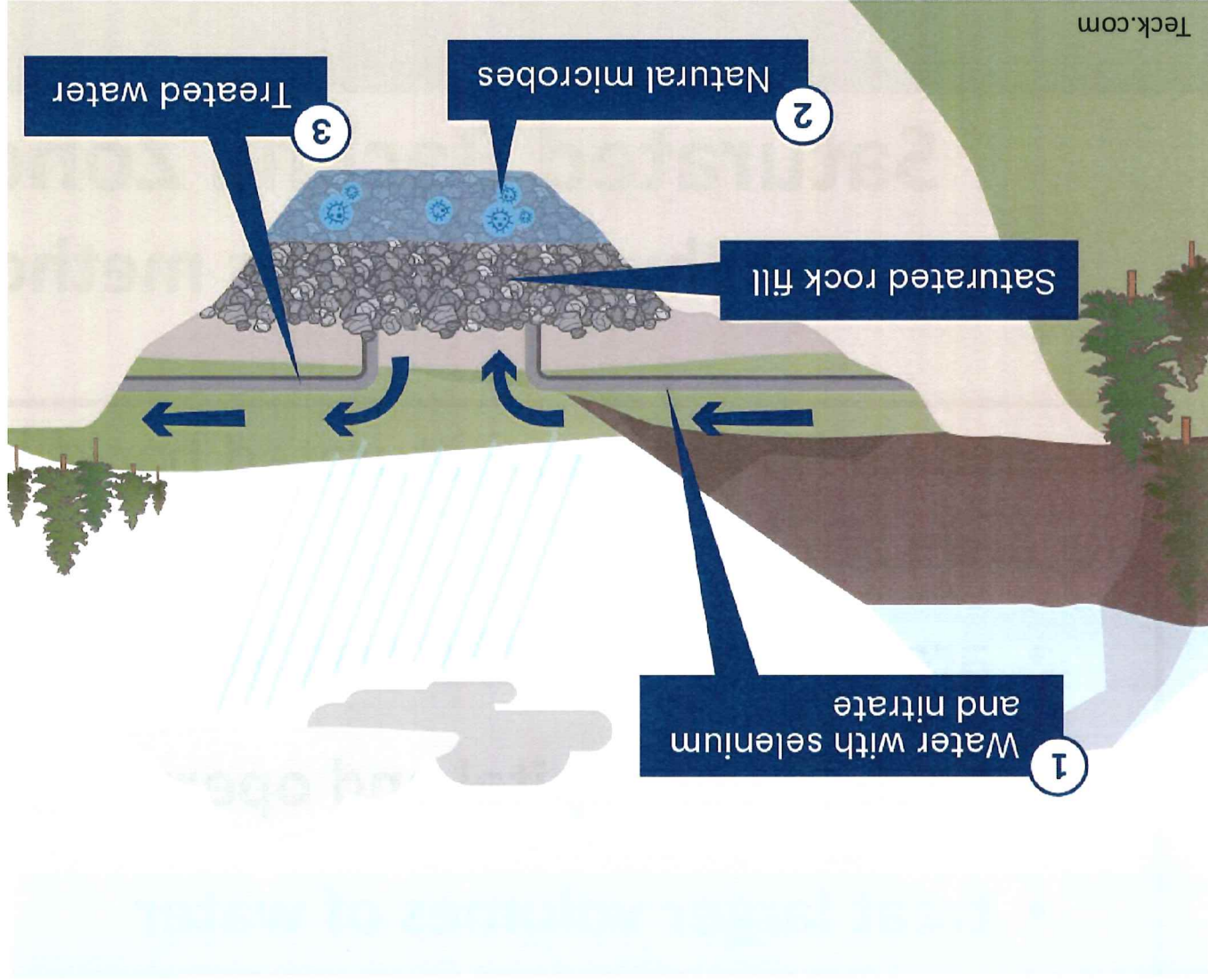
High ridges,  
away from  
creeks





# Saturated Backfill Zone (SBZ)

## How does it work?



- Teck's Elkview Saturated Rock Fill can treat up to **20 million litres** of water per day
- Grassy Mountain will treat **7.5 million litres** per day

# **Saturated Backfill Zone (SBZ)**

## **Why choose this method?**

Riversdale has chosen saturated backfill technology because SBZ's:

- **are quicker to build and less complex to operate**
- **have lower capital and operating costs**
- **treat larger volumes of water**
- **use less energy**
- **require smaller environmental footprints**



# Water Quality Summary

**As a modern mine, Grassy Mountain is proposing to manage selenium by:**

- Storing ex-pit rock in high isolated areas away from streams
- Storing as much rock as possible in the pit submerged under water
- Using modern selenium treatment technology (Saturated Backfill Zone)
- Conducting baseline monitoring and ongoing monitoring of water on site and in the adjacent water bodies

# Rigorous Regulatory Review

- The Grassy Mountain Project has been thoroughly reviewed by several regulatory agencies in an extensive five-year process
- Conditions and ongoing performance of the Project will be overseen by competent federal and provincial regulators
- Indigenous communities will also monitor the Project and provide feedback and recommendations all the way through to final reclamation



# Questions?

Thank You



Bengla Mining Limited Operating as Riversdale Resources



